



EN	User manual	TH	คู่มือการใช้งาน
MS-MY	Bahasa Malaysia	ZH-T	繁體中文



© 2022 Philips Domestic Appliances Holding B.V.
All rights reserved.
6608.000.0820.6 (04/07/2022)



English

1 Important

Read this user manual carefully before you use the Rice cooker and save it for future reference.

Danger

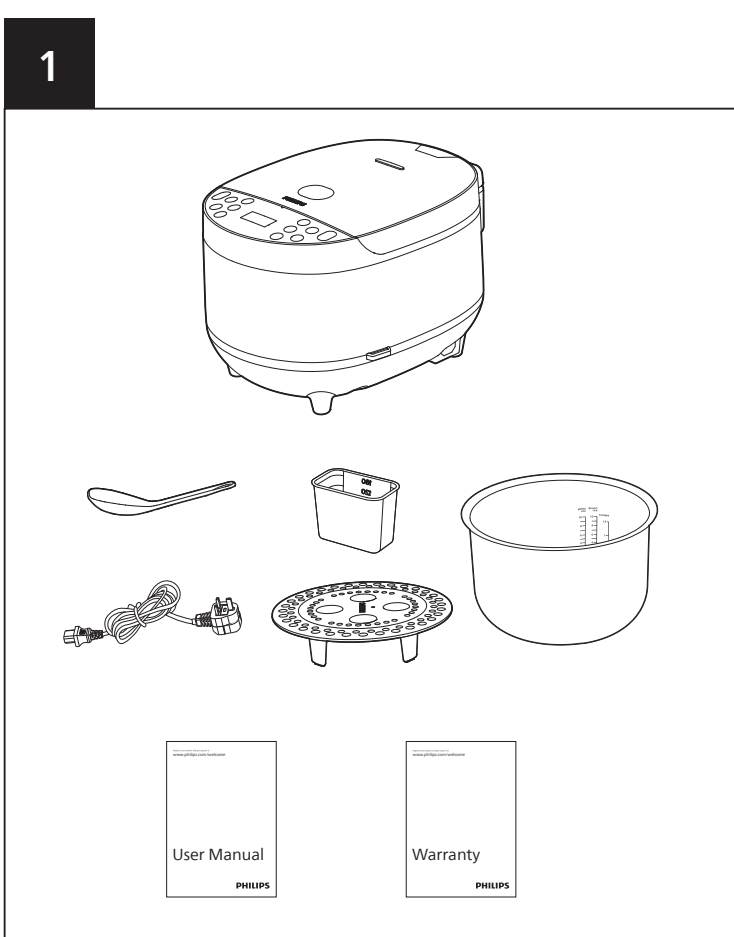
- The appliance must not be immersed.

Warning

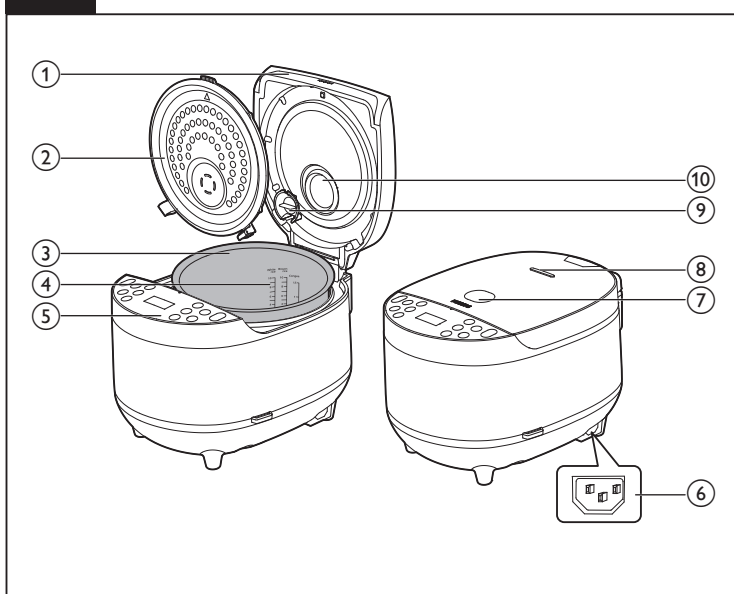
- This appliance shall not be used by children from 0 year to 8 years.
- This appliance can be used by children aged from 8 years and above if they are continuously supervised and they have been given supervision or instruction concerning use of the appliance in a safe way and understand the hazards involved.
- This appliance can be used by people with reduced physical, sensory or mental capabilities or lack of experience and knowledge if they have been given supervision or instruction concerning use of the appliance in a safe way and understand the hazards involved.
- This appliance is not intended for use by persons (including children) with reduced physical, sensory or mental capabilities, or lack of experience and knowledge, unless they have been given supervision or instruction concerning use of the appliance by a person responsible for their safety.
- Children should be supervised to ensure that they do not play with the appliance.
- Keep the appliance and its cord out of reach of children aged less than 8 years.
- Cleaning and user maintenance shall not be made by children.
- This appliance should be positioned in a stable situation with the handles (if any) positioned to avoid spillage of the hot liquids.
- This appliance is intended to be used in household and similar applications such as:
 - Staff kitchen areas in shops, offices and other working environments;
 - Farm houses;
 - By clients in hotels, motels and other residential type environments.
- Bed and breakfast type environment.
- If the power cord set is damaged, it must be replaced by a cord set available from the manufacturer.
- Cooking appliances should be positioned in a stable situation with the handles (if any) positioned to avoid spillage of the hot liquids.
- The appliance is not intended to be operated by means of an external timer or a separate remote-control system.
- Check if the voltage indicated on the appliance corresponds to the local power voltage before you connect it.
- Do not let the power cord hang over the edge of the table or worktop on which the appliance stands.
- Make sure the heating element and the outside of the inner pot are clean and dry before you put the plug in the power outlet.
- Do not plug in the appliance or press any of the buttons on the control panel with wet hands.
- WARNING:** Make sure to avoid spillage on the power connector to avoid a potential hazard.
- WARNING:** Always follow the instructions and use the appliance properly to avoid potential injury.
- According to the instructions prescribed in this user manual, use a soft damp cloth to clean the surfaces in contact with food and make sure to remove all the food residues stuck to the appliance.
- Don't place the power cord under the appliance when in use.
- When placing the steaming basket, avoid touching the side wall of the inner pot, otherwise it may cause deformation due to high temperature.

Caution

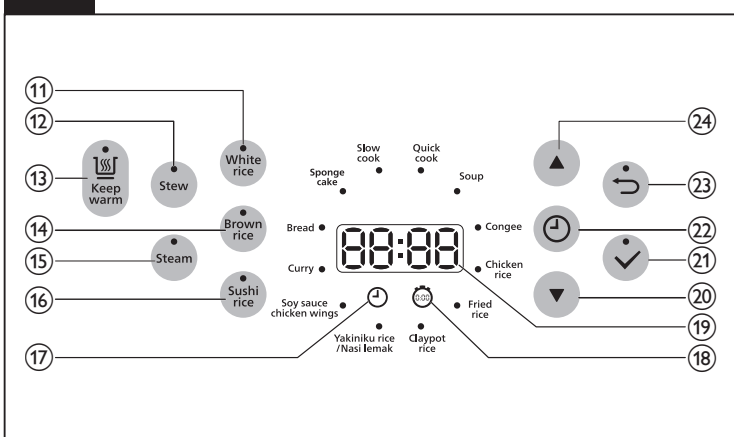
- CAUTION:** Surface of the heating element is subject to residual heat after use.
- Never use any accessories or parts from other manufacturers or that Philips does not specifically recommend. If you use such accessories or parts, your guarantee becomes invalid.
- Do not expose the appliance to high temperatures, nor place it on a working or still hot stove or cooker.
- Do not expose the appliance to direct sunlight.
- Place the appliance on a stable, horizontal, and level surface.
- Always put the inner pot in the appliance before you put the plug in the power outlet and switch it on.
- Do not place the inner pot directly over an open fire to cook rice.
- Do not use the inner pot if it is deformed.
- The accessible surfaces may become hot when the appliance is operating. Take extra caution when touching the appliance.
- Beware of hot steam coming out of the steam vent during cooking or out of the appliance when you open the lid. Keep hands and face away from the appliance to avoid the steam.
- Do not lift and move the appliance while it is operating.
- Do not exceed the maximum water level indicated in the inner pot to prevent overflow which might cause potential hazard.
- Do not place the cooking utensils inside the pot while cooking, keeping warm or reheating rice.
- Only use the cooking utensils provided. Avoid using sharp utensils.
- To avoid scratches, it is not recommended to cook ingredients with crustaceans and shellfish. Remove the hard shells before cooking.
- Do not insert metallic objects or alien substances into the steam vent.
- Do not place a magnetic substance on the lid. Do not use the appliance near a magnetic substance.
- Always let the appliance cool down before you clean or move it.
- Always clean the appliance after use. Do not clean the appliance in a dishwasher.
- Always unplug the appliance if not used for a longer period.



2



3



- If the appliance is used improperly or for professional or semiprofessional purposes, or if it is not used according to the instructions in this user manual, the guarantee becomes invalid and Philips refuses liability for any damage caused.

Electromagnetic fields (EMF)

This Philips appliance complies with all applicable standards and regulations regarding exposure to electromagnetic fields.

2 Your Rice cooker

Congratulations on your purchase, and welcome to Philips! To fully benefit from the support that Philips offers, register your product at www.philips.com/welcome.

3 What's in the box (fig. 1)

Rice cooker main unit	Measuring cup
Rice and soup 2 in 1 spoon	Power cord
Steaming basket	User manual
Warranty card	

4 Overview

Product overview (fig. 2)

① Top lid	⑥ Power socket
② Detachable inner lid	⑦ Lid release button
③ Inner pot	⑧ Steam vent
④ Water level indications	⑨ Steam vent cap
⑤ Control panel	⑩ Steam valve

Controls overview (fig. 3)

⑪ Rice button	Ⓜ Preset time indicator
⑫ Stew button	Ⓨ Time display
⑬ Keep warm button	Ⓩ Menu selection button
⑭ Brown rice button	ⓐ Confirmation button
⑮ Steam button	ⓑ Cooking time/preset time button
⑯ Sushi rice button	ⓓ Cancel button
⑰ Timer indicator	ⓔ Menu selection button

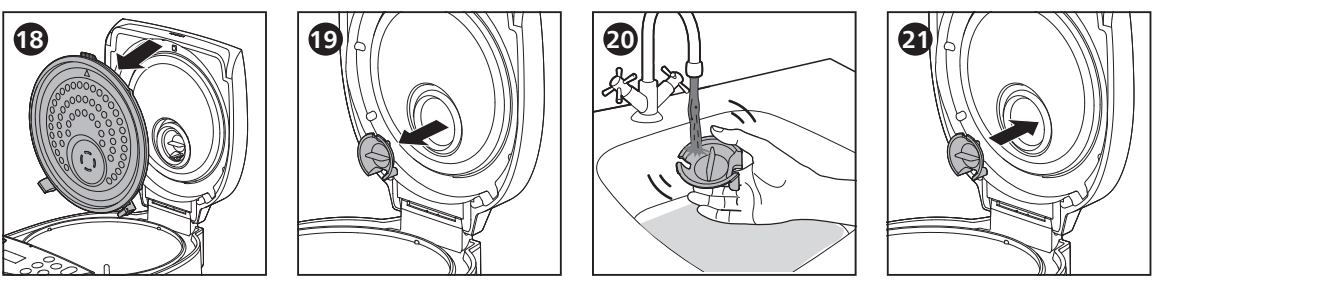
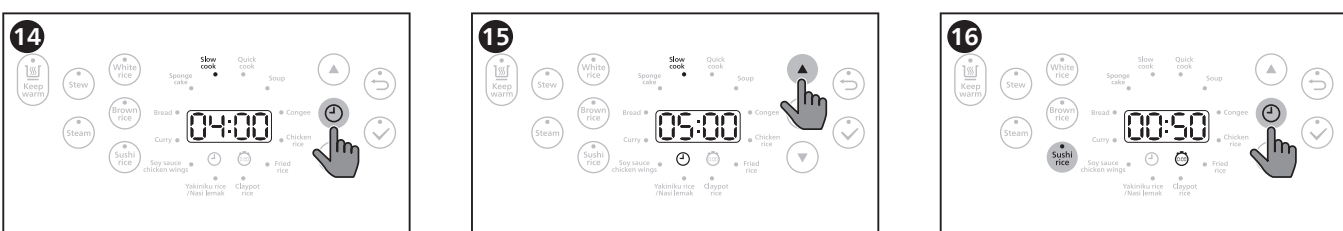
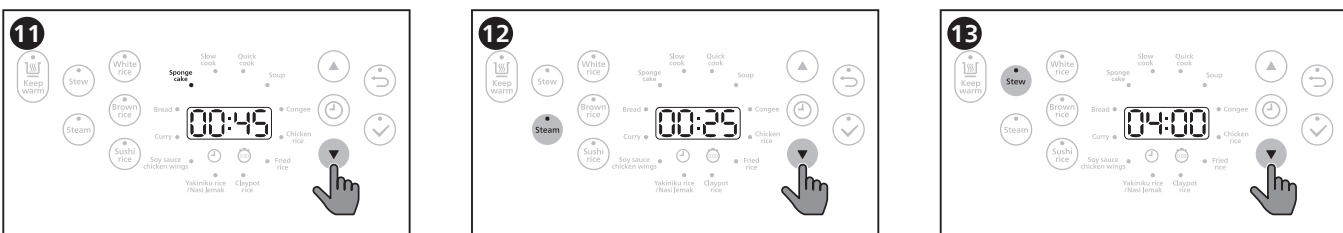
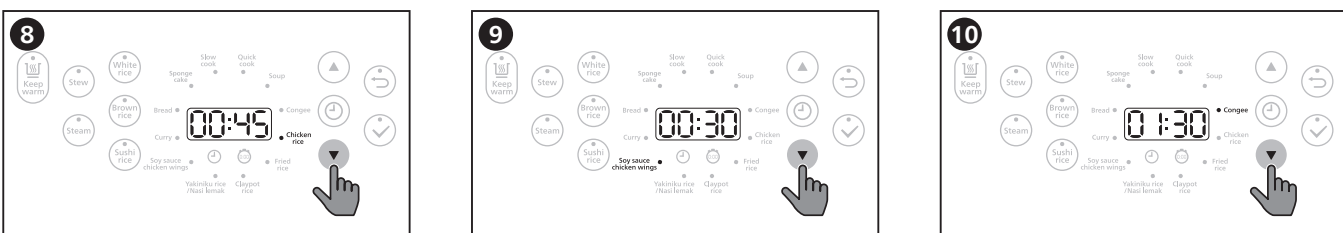
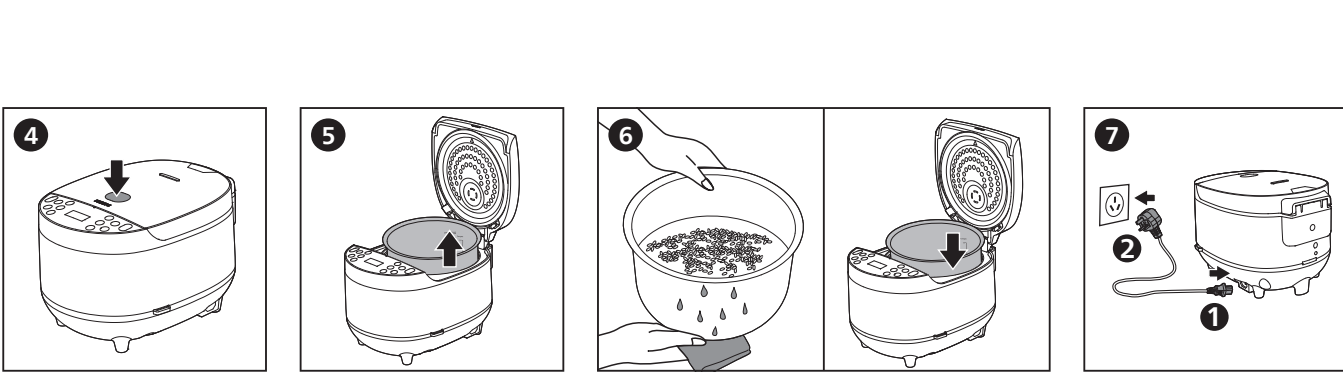
Cooking program

Cooking function	Default cooking time	Adjustable cooking time
Slow cook	4 hours	3-10 hours
Sponge cake	45 minutes	NA
Bread	45 minutes	30 minutes-2 hours
Curry	70 minutes	1-2 hours
Soy sauce chicken wings	30 minutes	25 minutes-2 hours
Yakiniku rice/Nasi Lemak	45 minutes	NA
Claypot rice	60 minutes	NA
Fried rice	40 minutes	NA
Chicken rice	45 minutes	NA
Congee	1.5 hours	1-4 hours
Soup	2 hours	1-4 hours
Quick cook	25 minutes	NA
Stew	4 hours	3-6 hours
Steam	25 minutes	10-59 minutes
White rice	45 minutes	NA
Brown Rice	60 minutes	NA
Sushi rice	50 minutes	NA
Keep warm	24 hours	NA

5 Using the Rice cooker

Before first use

- Take out all the accessories from the inner pot. Remove the packaging material of the inner pot.
- Before first use, boil water and clean the Rice cooker.
- Clean the parts thoroughly before using it for the first time (see chapter "Cleaning and Maintenance").



Preparation before cooking

1 Warning

- Make sure that the detachable inner lid is properly installed.

Note

- Do not fill the inner pot with food and liquid less than the minimum of the water level indications, or more than the maximum of the water level indications.
- For rice cooking, follow the water level indications on the inside of the inner pot. You can adjust the water level for different types of rice and according to your own preference. Do not exceed the maximum quantities indicated on the inside of the inner pot.
- After the cooking process is started, you can press \rightarrow to terminate the current work, and the appliance goes to menu selection mode.

Perform the following preparations before cooking with the Rice cooker:

- Press the lid release button to open the Rice cooker (fig. 4).
- Take out the inner pot from the Rice cooker (fig. 5).
- Put the pre-washed food in the inner pot, wipe the outside and bottom of the inner pot dry with soft cloth, then put it back into the Rice cooker (fig. 6).
- Close the lid.
- Put the plug into the power socket (fig. 7).

Note

- Make sure the outside of the inner pot is dry and clean, and that there is no foreign residue on the heating element.
- Make sure the inner pot is in proper contact with the heating element.

Rice cooking

There are 8 cooking function: **Yakiniku rice/Nasi Lemak, Claypot rice, Fried rice, Chicken rice, Quick cook, White rice, Brown Rice and Sushi rice.** For cooking time range, refer to Chapter "Cooking program".

- Follow the steps in "Preparations before cooking".
- Press \odot or \odot to select one of the cooking menus (fig. 8).
 - The indicator chosen cooking function lights up, the default cooking time is displayed on the screen.
- Press \checkmark to confirm, the Multi cooker starts working in the selected mode.
- When the cooking is finished, you will hear 4 beeps and the selected cooking function light will be off.
- The Rice cooker will be in keep-warm mode automatically.
 - The keep-warm indicator lights up.

Note

- You can add more ingredients according to the recipe for different rice menus.
- The level marked inside the inner pot is just an indication. You can always adjust the water level for different types of grains and your own preference.
- Besides following the water level indications, you may also add rice and water at 1:1-1.3 ratio for rice cooking.
- Do not exceed the volume indicated or exceed the maximum water level, as this may cause the appliance to overflow.
- After the cooking process is started, you can press \rightarrow to terminate the current work, and the appliance goes to menu selection mode.

Soy sauce chicken wings

- Put chicken wings and other ingredients into the inner pot.
- Follow the steps in "Preparations before cooking".
- Press the \odot or \odot to select **Soy sauce chicken wings** (fig. 9).
 - The indicator chosen cooking function lights up, the default cooking time is displayed on the screen.
- Press \checkmark to confirm, the Multi cooker starts working in the selected mode.
- Open the lid, turn the chicken wings over after 15 minutes.
- Close the lid to continue the cooking process, when the cooking is finished, you will hear 4 beeps and the selected cooking function light will be off.
- The Rice cooker will be in keep-warm mode automatically.
 - The keep-warm indicator lights up.

Congee/Soup/Curry

- Put ingredients and water into the inner pot.
- Follow the steps in "Preparations before cooking".
- Press the \odot or \odot to select **Congee/Soup or Curry** (fig. 10).
 - The indicator chosen cooking function lights up, the default cooking time is displayed on the screen.
- Press \checkmark to confirm, the Multi cooker starts working in the selected mode.
- When the cooking is finished, you will hear 4 beeps and the selected cooking function light will be off.
- The Rice cooker will be in keep-warm mode automatically.
 - The keep-warm indicator lights up.

Note

- Do not exceed the maximum water level indicated in the inner pot, as this may cause the Rice cooker to overflow.

Interior

Inside of the top lid and the main body:

- Wipe with a damp cloth.
- Make sure to remove all the food residues stuck to the Rice cooker.

Heating element:

- Wipe with a damp cloth.
- Remove food residues with a damp cloth.

Exterior

Surface of the top lid and outside of the main body:

- Wipe with a cloth dampened with soap water.
- Only use soft and dry cloth to wipe the control panel.
- Make sure to remove all the food residues around the control panel.

Accessories

Spatula and inner pot:

- Soak in hot water and clean with sponge.

7 Recycling

Do not throw away the product with the normal household waste at the end of its life, but hand it in at an official collection point for recycling. By doing this, you help to preserve the environment.

Follow your country's rules for the separate collection of electrical and electronic products. Correct disposal helps prevent negative consequences for the environment and human health.

8 Guarantee and service

If you need service or information, or if you have a problem, visit the Philips website at www.philips.com or contact the Philips Customer Care Center in your country. You can find its phone number in the worldwide guarantee booklet. If there is no Customer Care Center in your country, go to your local Philips dealer.

9 Specifications

Model Number	HD4518
Rated power output	790 W
Rated capacity	5.0L
Rice capacity	1.8L

10 Troubleshooting

If you encounter problems when using this Rice cooker, check the following points before requesting service. If you cannot solve the problem, contact the Philips Consumer Care Center in your country.

Problem	Solution
The light on the button does not go on.	<p>There is a connection problem. Check if the power cord is connected to the Rice cooker properly and if the plug is inserted firmly into the power outlet.</p> <p>The light is defective. Take the appliance to your Philips dealer or a service center authorized by Philips.</p>
The rice is not cooked.	<p>There is not enough water. Add water according to the scale on the inside of the inner pot.</p> <p>Make sure that there is no foreign residue on the heating element and the outside of the inner pot before switching the Rice cooker on.</p> <p>The heating element is damaged, or the inner pot is deformed. Take the Rice cooker to your Philips dealer or a service center authorized by Philips.</p>
The rice is too dry and not well cooked.	Add more water to the rice, and cook for a bit longer.
The Rice cooker does not switch to the keep-warm mode automatically.	<p>You might have pressed the keep-warm button before pressing the start button. In this case the Rice cooker will be in standby mode after the cooking is finished.</p> <p>The temperature control is defective. Take the appliance to your Philips dealer or a service center authorized by Philips.</p>
The rice is scorched.	You have not rinse the rice properly. Rinse the rice until the water runs clear.
Water spills out of the Rice cooker during cooking.	Make sure that you add water to the level indicated on the scale inside the inner pot that corresponds to the number of cups of rice used.
Rice smells bad after cooking.	<p>Clean the inner pot with some washing detergent and warm water.</p> <p>After cooling, make sure the steam vent cap, inner lid and inner pot is cleaned thoroughly.</p>

Bahasa Melayu

1 Penting

Baca manual pengguna ini dengan teliti sebelum anda menggunakan Periuq pemasak serba guna ini dan simpan manual pengguna ini untuk rujukan masa hadapan.

Bahaya

- Perkakas tidak boleh diredam.

Amaran

- Perkakas ini tidak boleh digunakan oleh kanak-kanak yang berumur 0 hingga 8 tahun.
- Perkakas ini boleh digunakan oleh kanak-kanak berumur 8 tahun ke atas jika mereka diawasi sepanjang masa atau telah diberikan pengawasan atau arahan berkenaan penggunaan perkakas dengan cara yang selamat dan memahami bahaya yang mungkin berlaku.
- Perkakas ini boleh digunakan oleh orang yang kurang upaya dari segi fizikal, deria atau mental atau kurang pengalaman dan pengetahuan jika mereka diawasi dan telah diberi arahan berkenaan penggunaan perkakas secara selamat dan memahami bahaya yang mungkin berlaku.
- Perkakas ini tidak dimaksudkan untuk digunakan oleh orang (termasuk kanak-kanak) yang kurang upaya dari segi fizikal, deria atau mental atau kurang pengalaman dan pengetahuan, melainkan mereka telah diberikan pengawasan atau arahan berkenaan penggunaan perkakas ini oleh orang yang bertanggungjawab atas keselamatan mereka.
- Kanak-kanak perlu diawasi untuk memastikan mereka tidak bermain dengan perkakas ini.
- Jauhkan perkakas dan kordnya jauh dari jangkauan kanak-kanak yang berumur kurang daripada 8 tahun.
- Pembelahan dan penyleenggaraan oleh pengguna tidak boleh dilakukan oleh kanak-kanak.
- Perkakas ini hendaklah diletakkan di tempat yang stabil iaitu pemegangnya (jika ada) diletakkan untuk mengelakkan tumpahan cecair yang panas.
- Perkakas ini dimaksudkan untuk digunakan di dalam rumah dan untuk penggunaan lain yang serupa seperti:
 - Kawasan dapur pekerja di kedai, pejabat dan persekitaran kerja yang lain;
 - Rumah ladang;
 - Oleh pelanggan di hotel, motel dan persekitaran tempat menginap yang lain;
 - Persekitaran jenis inap-sarapan.
- Jika set kord kuasa rosak, kord perlu digantikan dengan set kord daripada pengeluar.
- Perkakas memasak hendaklah diletakkan di tempat yang stabil iaitu pemegangnya (jika ada) diletakkan untuk mengelakkan tumpahan cecair yang panas.
- Jangan biarkan kord kuasa terjuntai dari tepi meja atau permukaan ruang kerja tempat perkakas itu diletakkan.
- Pastikan elemen pemanasan dan bahagian luar periuq dalam bersih dan kering sebelum anda memasang palam kepada saluran keluar kuasa.
- Jangan masukkan paku perkuas atau tekan sebarang butang pada panel kawalan dengan tangan yang basah.
- AMARAN:** Pastikan anda mengelakkan tumpahan pada penyambung kuasa untuk mengelakkan kemungkinan bahaya.
- AMARAN:** Sentiasa ikuti arahan dan menggunakan perkakas dengan betul untuk mengelakkan kemungkinan kejadian.
 - Mengikuti arahan yang dinyatakan dalam manual pengguna ini, gunakan kain lembut yang lembap untuk membersihkan permukaan yang bersentuhan dengan makanan dan pastikan sisa makanan yang melekat pada perkakas dibersihkan juga.
- Jangan letakkan kord kuasa di bawah perkakas semasa sedang digunakan.
- Apabila meletakkan bakul pengukus, elakkan daripada bersentuhan dengan sisi dinding periuq didalam, jika tidak kecacatan mungkin akan berlaku akibat suhu yang tinggi.

Note

- You can adjust the cooking time for **Slow cook, Bread, Soy sauce thicken wings, Congee, Soup, Stew, Curry and Steam.**

Adjust the cooking time

Note

- You can adjust the cooking time for **Slow cook, Bread, Soy sauce thicken wings, Congee, Soup, Stew, Curry and Steam.**

Note

- Choose a desired function.
- Press \odot to access the cooking time settings (fig. 14).
 - The cooking time indicator \odot displays on the screen.
- Press the \odot or \odot to adjust the cooking time you want (fig. 15).
- Press \checkmark to confirm. The All-in-One cooker starts working in the selected mode.

Adjust the preset time

Note

- The cooking process will be finished by the time the preset time has elapsed. If the preset time you set is shorter than the cooking time, the appliance will start the cooking process immediately.
- You can set the preset from 1-24 hours for all cooking functions except **Bread** and **Steam**.

Note

- Unplug the Rice cooker before starting to clean it.
- Wait until the Rice cooker has cooled down sufficiently before cleaning it.

Inner lid

- Pull the inner lid out outwards to remove it from the top lid for cleaning (fig. 18).
- Soak in hot water and clean with sponge.
- Make sure to remove all the food residues stuck to the Rice cooker.
- Re-install the inner lid back to the top lid.

Steam vent cap

- Follow the above steps to disassemble the inner lid.
- Disassemble the steam vent cap from the inner lid (fig. 19).
- Clean the steam vent cap under tap water (fig. 20). Make sure no food residue is left. Reassemble the steam box to the inner lid after cleaning is completed (fig. 21).

- Sentiasa bersihkan perkakas selepas digunakan. Jangan cuci perkakas dalam mesin basuh pinggan mangkuk.
- Cabut palam perkakas jika tidak akan digunakan untuk tempoh masa yang lama.
- Jika perkakas digunakan dengan cara yang tidak betul atau untuk tujuan profesional atau separa profesional, atau jika ia tidak digunakan mengikut arahan dalam panduan pengguna ini, jaminan menjadi tidak sah dan Philips menolak liability terhadap sebarang kerosakan yang berlaku.

Medan elektromagnet (EMF)

Perkakas Philips mematuhi semua piawaian dan peraturan berkaitan dengan pendedahan kepada medan elektromagnet.

2 Periuq pemasak serba guna anda

Tahiliah aras pembelian anda dan selamat menggunakan Philips! Untuk mendapatkan manfaat sepenuhnya daripada sokongan yang ditawarkan oleh Philips, daftar produk anda di www.philips.com/welcome.

3 Isi kandungan kotak (raj. 1)

Unit utama periuq pemasak serba guna	Cawan pengukur
Sudu 2 dalam 1	Kord kuasa
Bakul pengukus	Manual pengguna
Kad waranti	

4 Gambaran keseluruhan

Gambaran keseluruhan produk (raj. 2)

① Penutup atas	⑦ Soket kuasa
② Tudung dalam boleh tanggal	⑧ Butang pelepas tudung
③ Periuq dalam	⑨ Bolong stim
④ Penunjuk paras air	⑩ Tukup bolong stim
⑤ Panel kawalan	⑪ Injap stim

Gambaran keseluruhan kawalan (raj. 3)

⑫ Butang nasi	⑰ Penanda masa pratetap
⑬ Butang stew	⑱ Paparan masa
⑭ Butang keep warm	⑲ Butang pilihan menu
⑯ Butang nasi perang	⑳ Butang pengesahan
⑰ Butang kukus	㉑ Butang masa memasak/masa pratetap
⑳ Butang nasi susui	㉒ Butang batal
㉓ Penanda pemasa	㉔ Butang pilihan menu

Program memasak

Masak memasak	Masa memasak lalai	Masa memasak boleh laras
Masak perlahan	4 jam	3-10 jam
Kek span	45 minit	Tidak Berkeajaan
Roti	45 minit	30 minit-2 jam
Kari	70 minit	1-2 jam
Kepak ayam kicap	30 minit	25 minit-2 jam
Nasi Yakiniku/Nasi Lemak	45 minit	Tidak Berkeajaan
Nasi claypot	60 minit	Tidak Berkeajaan
Nasi goreng	40 minit	Tidak Berkeajaan
Nasi ayam	45 minit	Tidak Berkeajaan
Bubur	1.5 jam	1-4 jam
Sup	2 jam	

