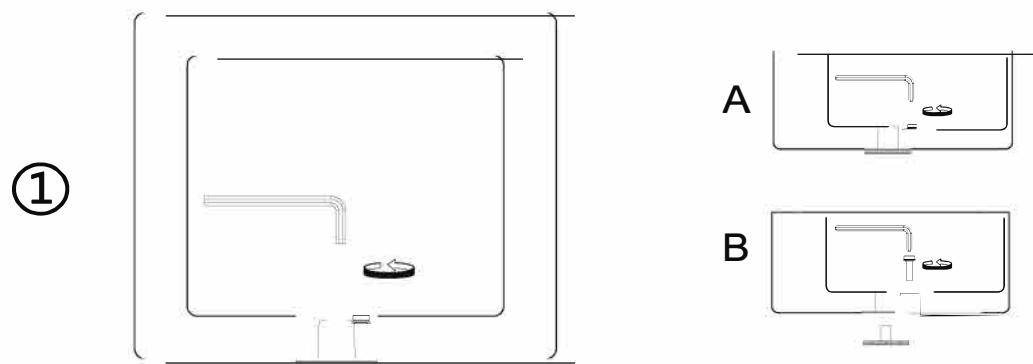
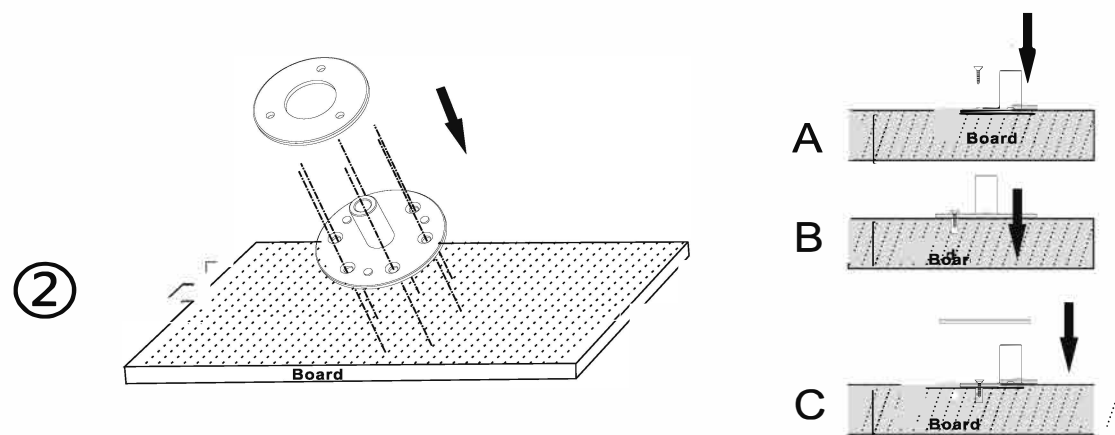


Floor Mounting

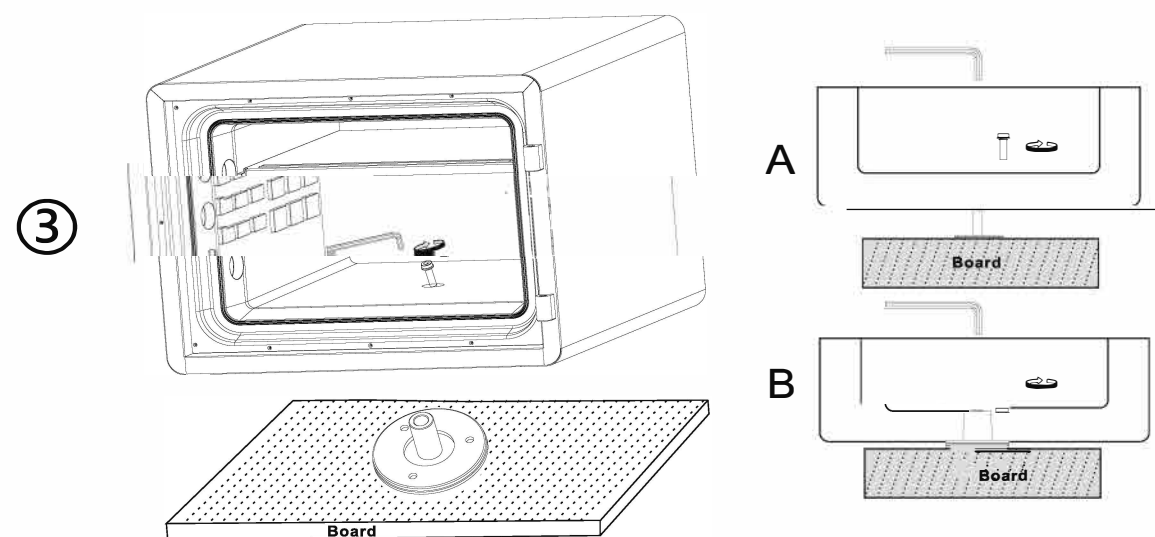
Step 1. Remove Allen Bolt using a 10 MM Allen wrench (not included). Remove the anchoring device from bottom of the safe.



Step 2. Fasten the anchoring device to the floor using the included screws.



Step 3. Place the safe down over top of the anchor and fasten with the Allen bolt.



Kassa

3/4

INSTRUCTIONS FOR SAFE PRODUCT

FIREPROOF SAFE

SKU NO.:60293757

ITEM NO.:SWF1418E-II

OPENING YOUR SAFE FOR THE FIRST TIME

Upon first opening, users should open the safe with the emergency key.

- Insert the emergency key and turn it clockwise.
- While holding the key to the right push handle downward to open.
- Insert batteries and set user codes.

IMPORTANT: Keep the emergency key in a safe place BUT NOT IN THE SAFE ITSELF.

INSERTING BATTERIES

- Remove the battery cover on the back of the door (see diagram).
- Insert 4 AA batteries by lining them up in a manner as indicated by the • + • and • - • signs.
- Replace the battery cover door.

SETTING THE FIRST USER CODE

- With the door open, press the reset button (located on the back of door, see diagram) the yellow light will come on.
- Input new code (3-8 digits), and press the "A or B". The yellow light will go out. Before closing the safe door enter the new user code and press the "A or B" (code will unlock safe with either A or B). Green light will come on indicating the code was accepted.

If the yellow light flashes with 5 beeps, the user code was not accepted.

SETTING THE SECOND USER CODE

- With the door open, press 00 then the reset button (located on the back of door, see diagram) the yellow light will come on.
- Input new code (3-8 digits), and press the "A or B". The yellow light will go out. Before closing the safe door enter the new user code and press the "A or B" (code will unlock safe with either A or B). Green light will come on indicating the code was accepted.
- Once all user codes are set up remove emergency key and place black key cover over key lock (see diagram). Keep the emergency key in a safe place BUT NOT IN THE SAFE ITSELF.

If the yellow light flashes with 5 beeps, the user code was not accepted.

OPENING THE SAFE WITH USER CODE

- Input your user code for "A" or "B".
- The green light will be on.
- Push handle in the downward position

OPENING THE SAFE WITH THE EMERGENCY KEY

NOTE: Keep the emergency key in a safe place BUT NOT IN THE SAFE ITSELF.

- Remove the cover of the emergency lock (see diagram).
- Insert the emergency key, turn it clockwise.
- While holding key to the right push handle down to open.

Kassa

1/4

AUTOMATIC LOCK

- 3 continuously wrong entries will activate lockout mode for 20 seconds.
- If a 6th wrong entry is made, lockout mode is 5 minutes.
- Beeping and yellow light will flash for this entire lockout mode.

CAUTION: The key pad will be disabled during lockout.

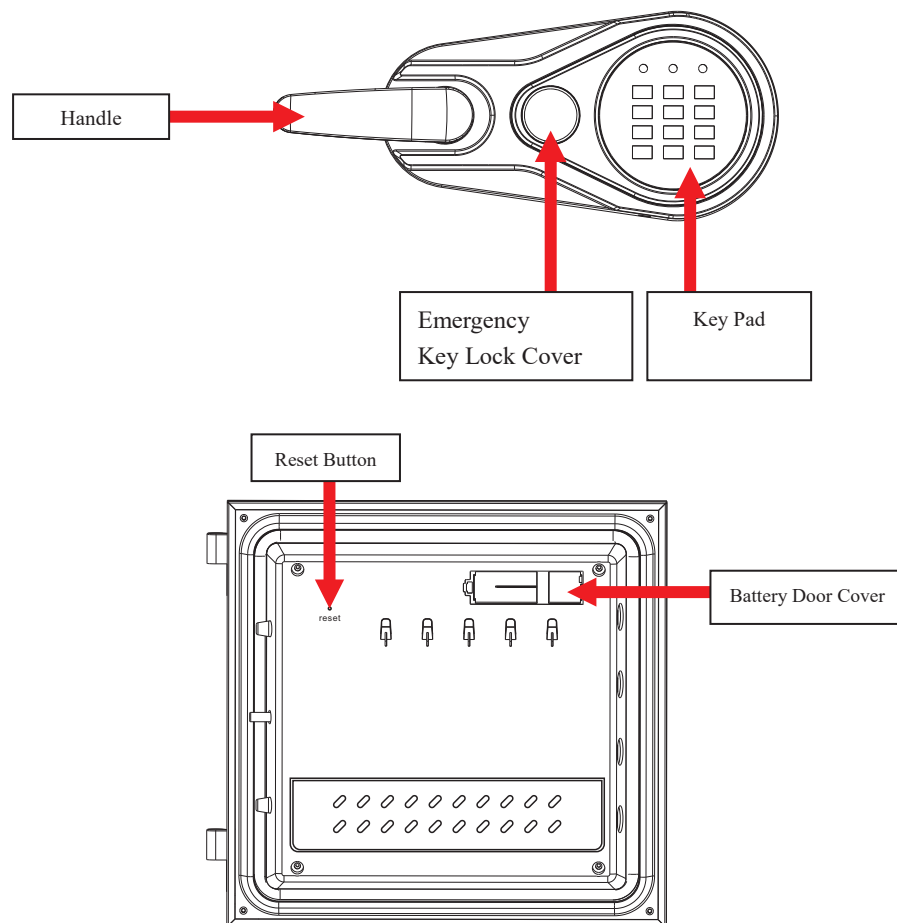
BATTERY REPLACEMENT

When batteries are removed the user codes will be deleted (see below caution).

To replace the batteries, open the battery compartment on the back of the door by pushing the tab in the direction of the arrow and install all new batteries.

NOTE: Do not mix old and new batteries. Do not mix alkaline, standard or rechargeable batteries.

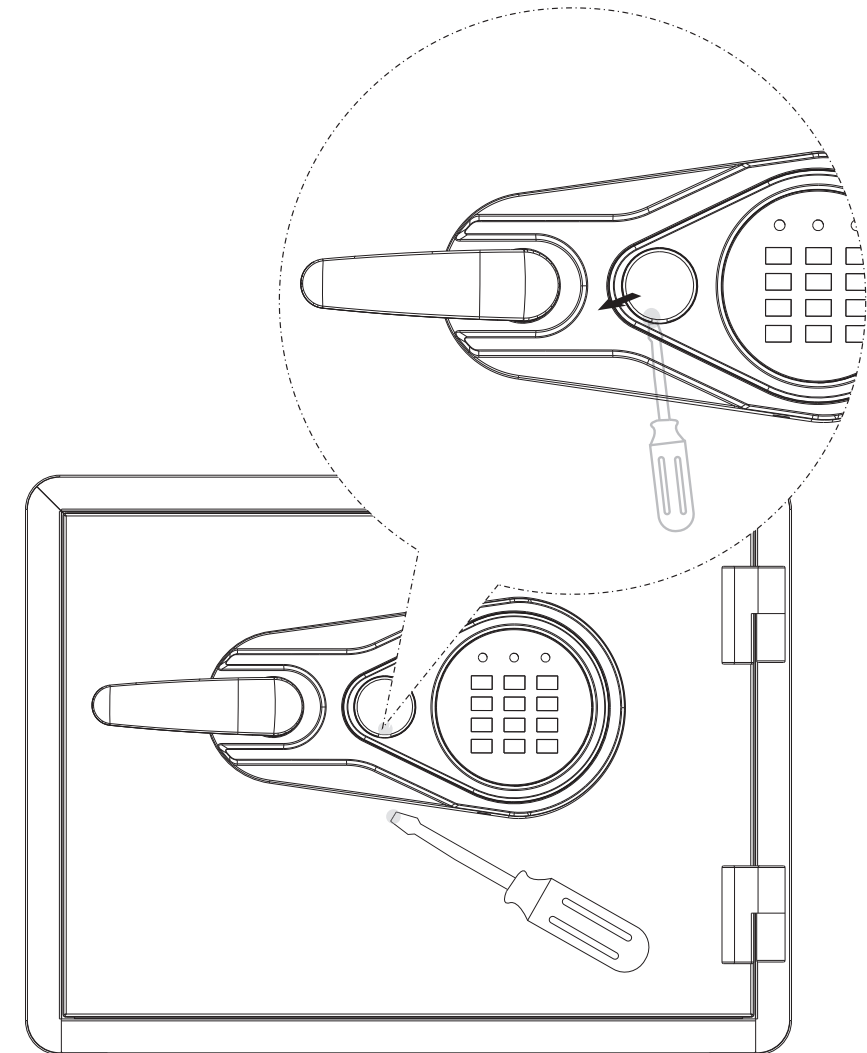
CAUTION! When batteries are removed the user codes will be deleted. You will need to reset user codes by following the SETTING THE USER CODE instructions. If batteries are dead you will need to use the Emergency Key to gain access to replace batteries. Then follow the SETTING THE USER CODE instructions.



Keep the emergency key in a safe place BUT NOT IN THE SAFE ITSELF

Emergency Key Cover Opening

Step 1. Use a slotted screwdriver to remove key cover.



Shelf Adjusting

Step 1. Raise the shelf upward and pull the shelf out.

